

The following historic pictures were taken
from the

Pratt Library Album

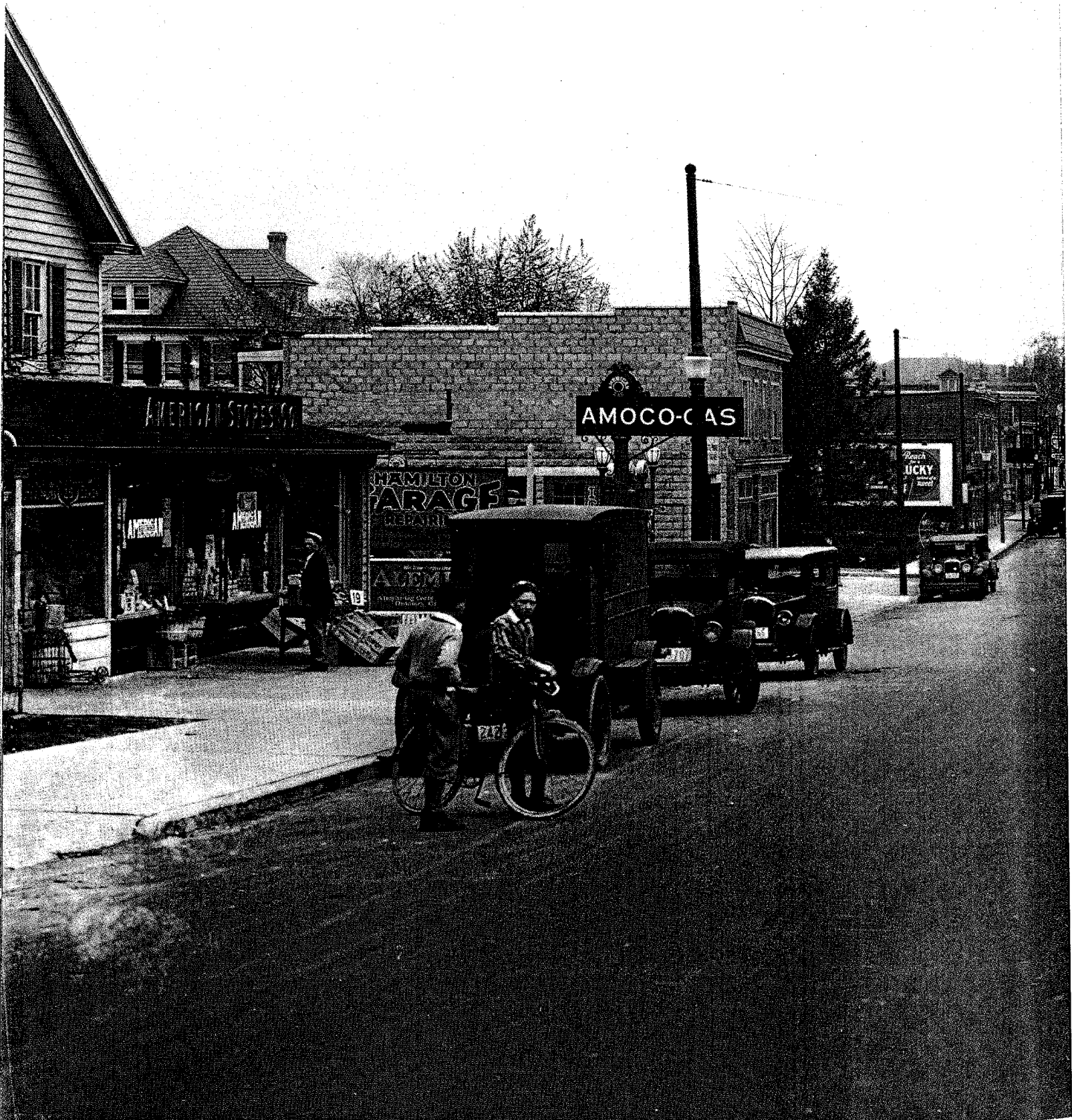
“Baltimore Neighborhood in Focus”

By Jacques Kelly

Publisher – Pratt Library



Chapter 6: **NORTHEAST**



219. The 5600 block of Harford Road was considerably less busy April 13, 1929, when most people traveled by streetcar. The view looks south toward Hamilton Avenue. The Hamilton Presbyterian Church is on the right, at Evergreen Avenue. After World War II, this area would experience rapid growth as housing developments, highways and shopping centers altered the face of Northeast Baltimore.



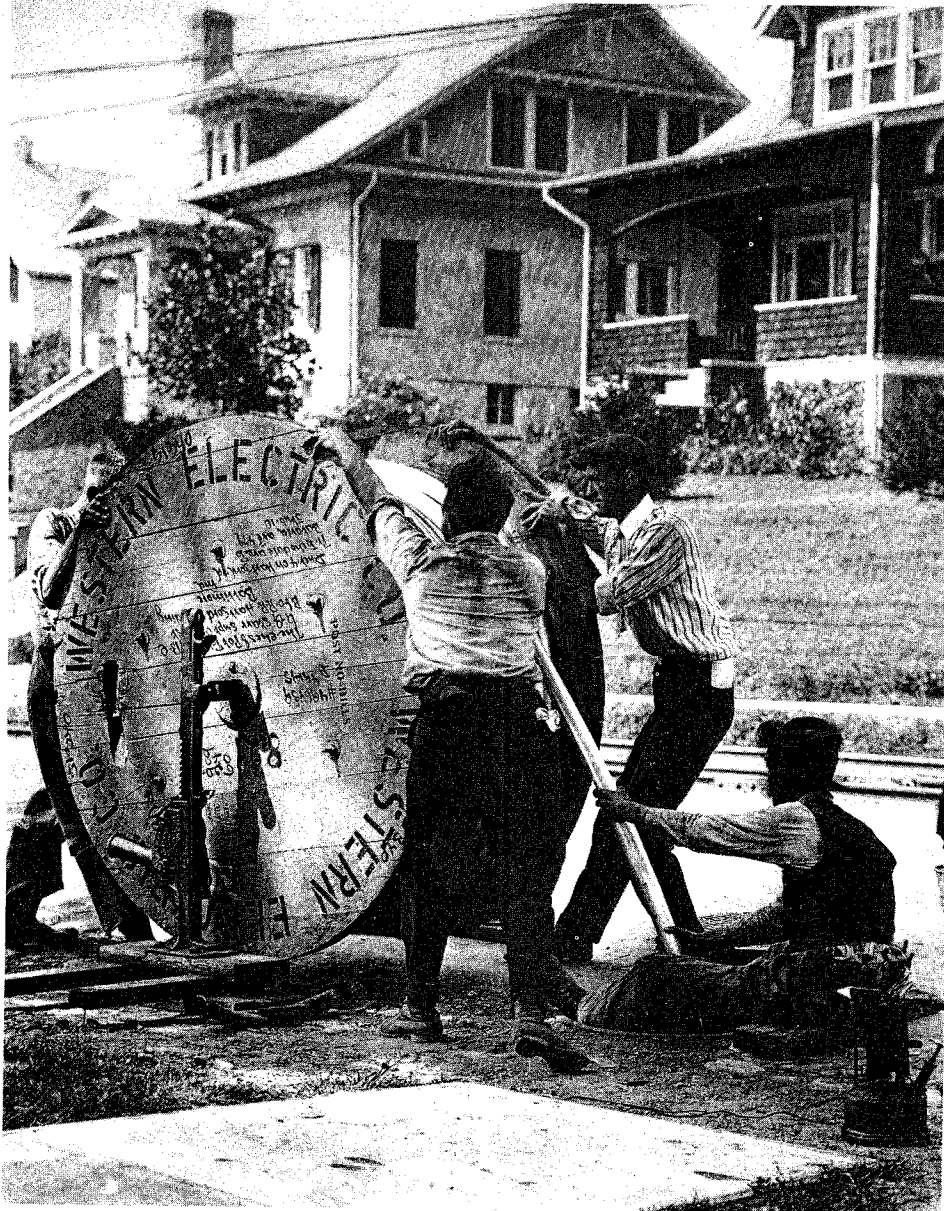
232. Weber's Park, along Harford Road near Lauraville, was a gathering spot in the 1890s and early years of the 20th century.



233. The Clifton Park golf course was the first public course in the city. It opened in May 1916 when the game was so new the city dared not charge a greens fee for the use of the course. The game soon caught on and the Clifton links were nearly always filled with scenes resembling this 1920s shot.

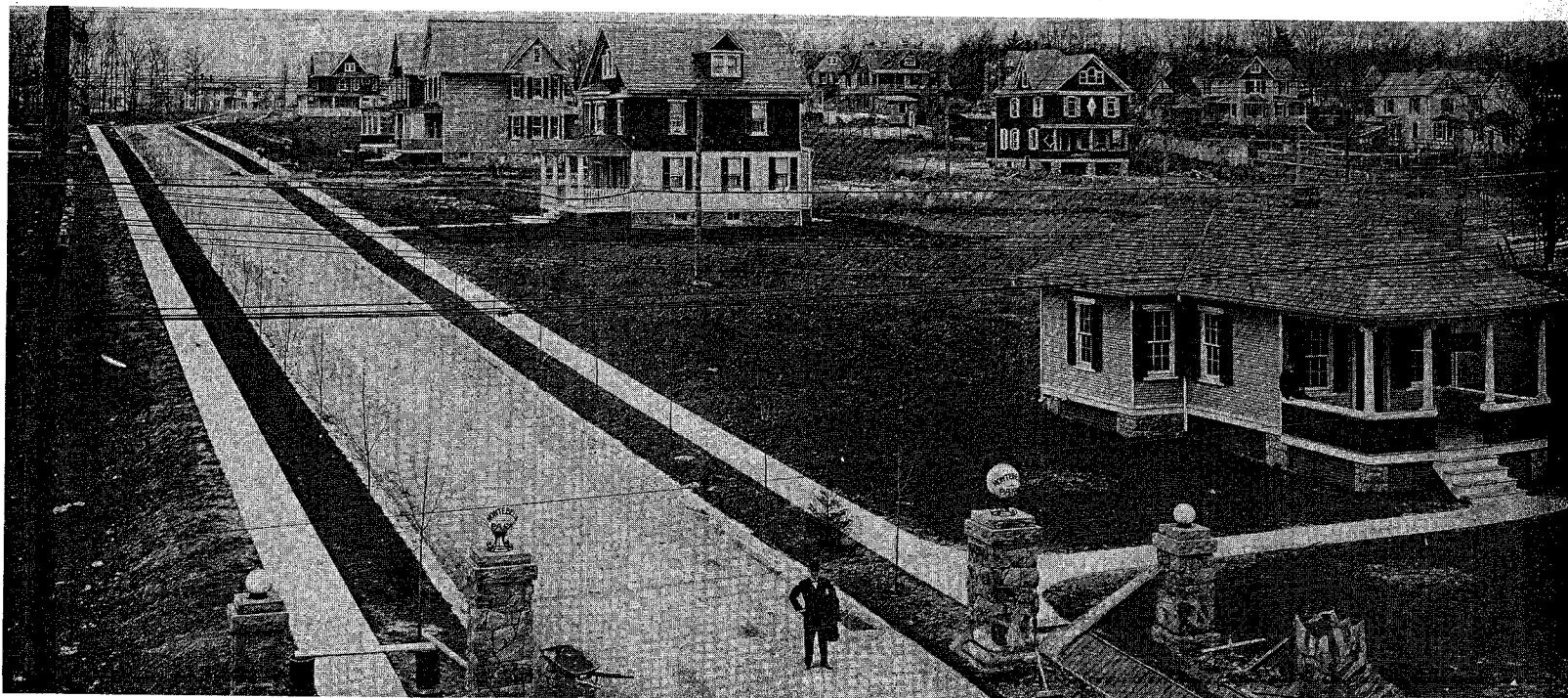


234. The No. 22 bus served a busy cross-town route. Here passengers board a vehicle headed for Highlandtown at Harford Road and 32nd Street on July 1, 1952.



235. Chesapeake and Potomac Telephone Company workers lay Western Electric cables along the 5200 block of Harford Road near Echodale Avenue in the late 1920s. The houses in the background are now demolished. The old Hamilton telephone exchange was established in August 1906 and served 69 subscribers.

237. **Opposite**, Bishop Thomas J. Toolen of Mobile laid the cornerstone of St. Francis of Assisi Church, Harford Road and Chesterfield Avenue, on May 15, 1927. The open fields in the background are part of Herring Run Park. A new church was begun on the site in 1952 and completed two years later.



236. Panorama of Montebello Park on March 30, 1913. Over the years the vacant lots would fill up with new cottages. The photo was taken in the vicinity of Grindon Avenue, off Harford Road. Cottages sold for about \$1,500.



240. A 1912 parade gathers outside the Laurville House restaurant and tavern, 4536 Harford Road. For more than 50 years the restaurant was operated by John C. Munders — father and son — who established this popular gathering place the year this photo was taken. John Munder Jr. was well known in Northeast Baltimore as a local politician and sporting figure. Munder's rathskeller was reported to have been the best in Northeast Baltimore.



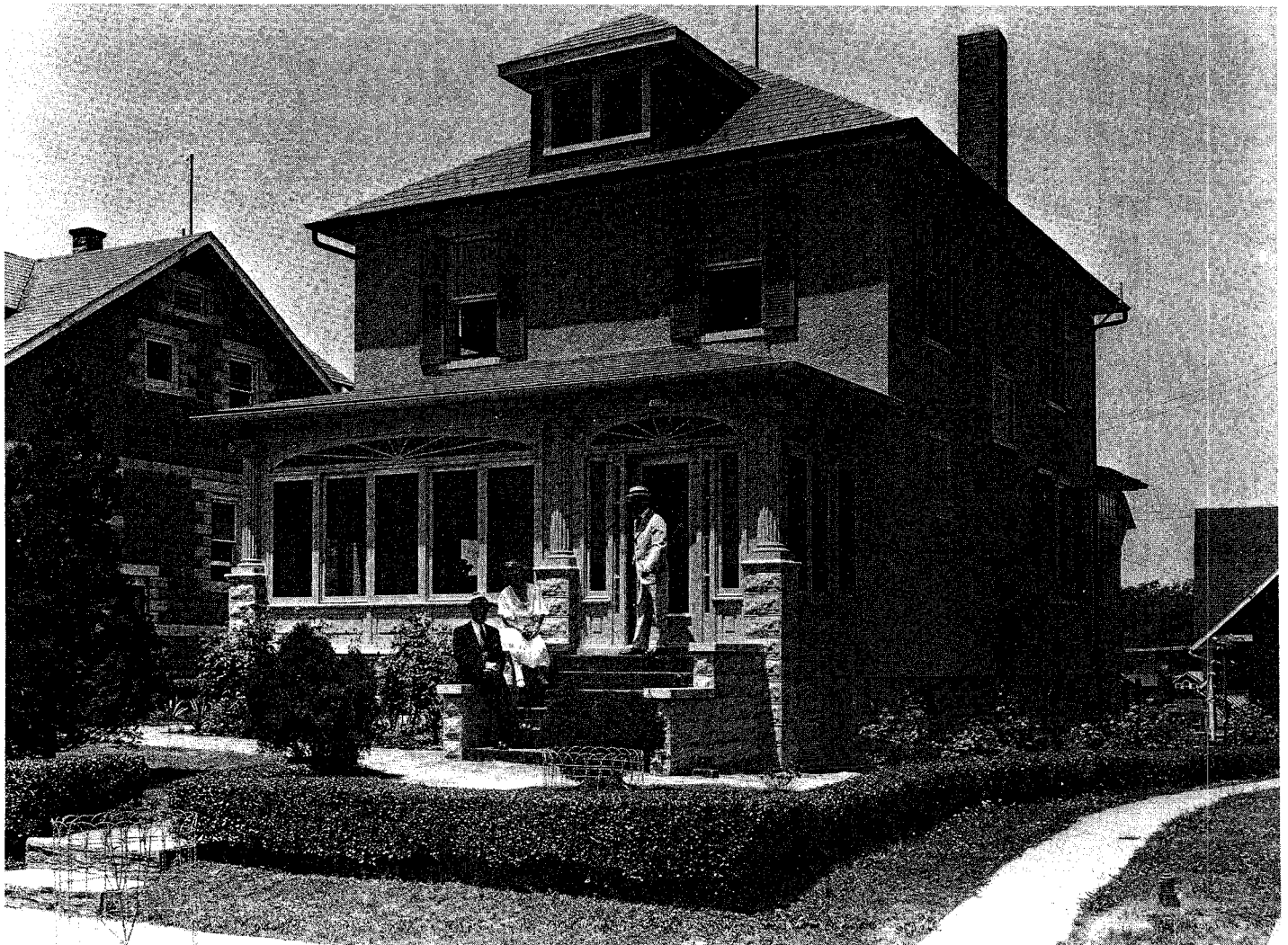
241. A 1910 outing with the Hamilton volunteer fire company included an open-air omnibus. The fire brigade used outings and carnivals to purchase fire-fighting equipment.



242. The Hamilton volunteer fire company was one of the community's main gathering spots on Hamilton Avenue. The company had a system of ringing a large bell that told the members the approximate location of a fire. In 1910, the community was in Baltimore County.



238. The family of Mrs. John S. League stands outside 4306 Arabia Avenue in June 1932. Many of Northeast Baltimore's residential streets are lined with bungalows and solid, well-maintained middle-class homes such as this.



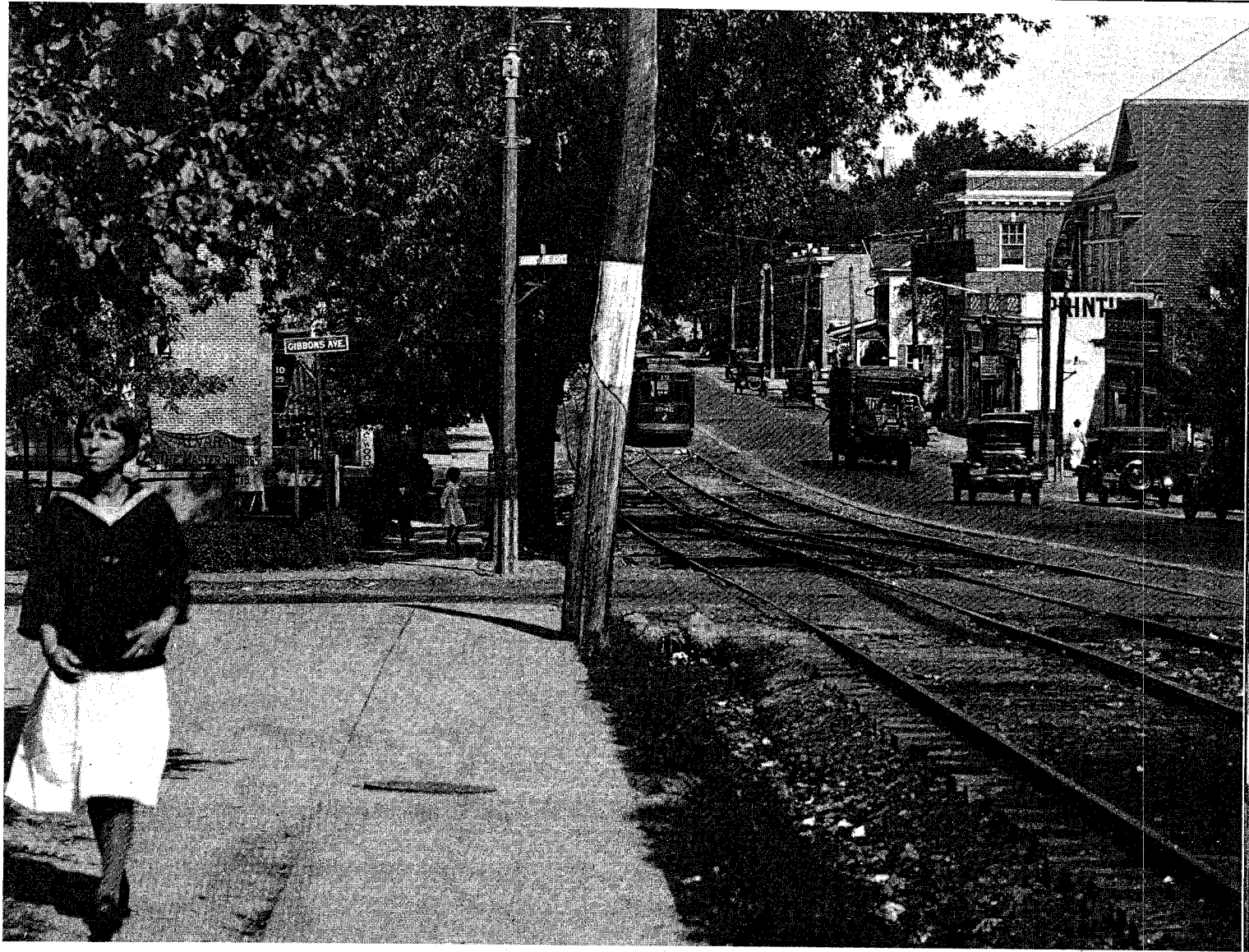
239. These Ailsa Avenue residents in Lauraville decorated their frame home in patriotic finery during the summer of 1911. Lauraville was still regarded as distant country to most Baltimoreans who then lived in rowhouse neighborhoods closer to the center of the city.



243. The annual May procession at St. Dominic's Catholic Church in Hamilton was a major neighborhood event. The parish was composed largely of Irish and Italian families in May 1939 when the procession advanced along Harford Road.



244. The business heart of Hamilton was the corner of Harford Road and Hamilton Avenue, shown here in March 1930. The No. 19 streetcar was the neighborhood's main transportation link, but automobiles were clearly on the ascendency. Purdum's drug store, Tames general store and the Arcade theater were Hamilton business landmarks.



245. Harford Road was making the transition from country road to city street when this October 1927 shot was taken at Gibbons Avenue. The view looks north.



246. The west side of the 5400 block of Harford Road, Hamilton, included these businesses in March of 1930: Joseph Moreland's real estate office, Riehl's bakery, an American grocery store, Harrison's pharmacy, Israel Schleider's Harford department store and a lunchroom.



247. The Hamilton Little Leaguers parade down Harford Road at Northern Parkway, May 14, 1956.



248. The 1928 view shows Belair Road, looking south across Herring Run Park. The city had just repaved the old turnpike, which was then developing as a major thoroughfare. Trolley cars on the No. 15 line operated in the middle of the street until 1963.